

How to upgrade TP-LINK wired Powerline Adapter

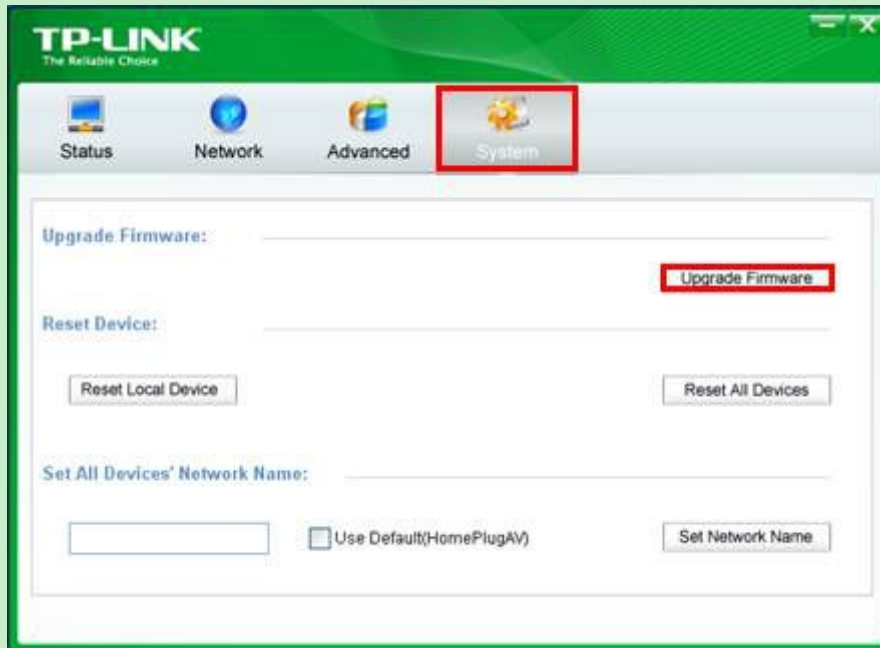
Notice:

- **Please verify the hardware version of your device so as to download the right firmware version.**
Wrong firmware upgrading may damage your device and void the warranty.

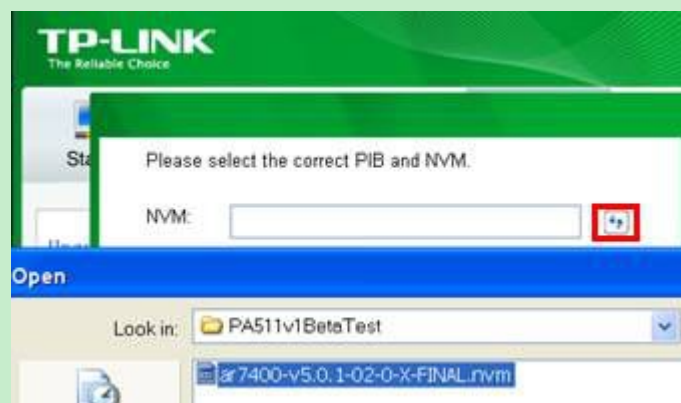
	Published Date	2013/10/9
	Language	English
	File Size	320 KB
	Operating System	Win2000/XP/2003/Vista/7/8/Mac/Linux
	Modifications and Bug Fixes	1. Fixed a bug that IPTV may interrupt for several seconds when STB(Set Top Box) is linked to TL-PA2010.

- **After you downloaded the firmware from TP-LINK website, please use decompression software such as WinZIP or WinRAR to extract the firmware file to a folder;**
- **Please download the latest Powerline Utility from TP-LINK website (you can also find it in the packaged CD), then use decompression software such as WinZIP or WinRAR to extract the firmware file to a folder;**
- **Do NOT turn off the power or cut down the Ethernet cable during upgrade process.**

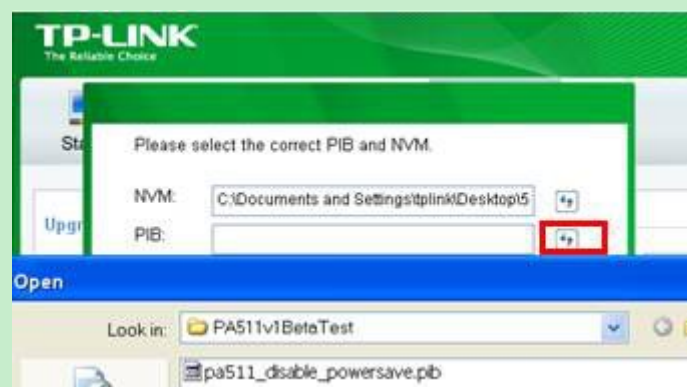
Step 1: Plug your computer into the Powerline adapter with Ethernet cable. Run the CD and install the Utility (you can also download the latest utility from TP-LINK website). Run it and you will see the **"Upgrade Firmware"** button in **System** tab.



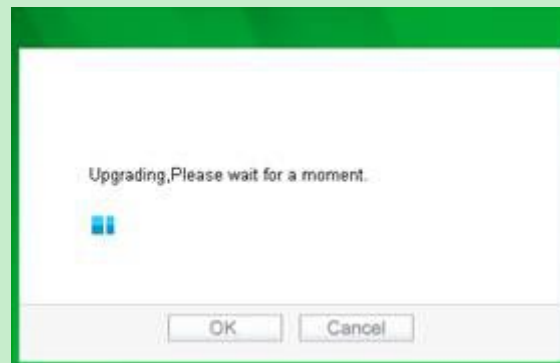
Step 2: Click **Upgrade Firmware**. Click **Browse** and select the related **NVM** file from the download folder.



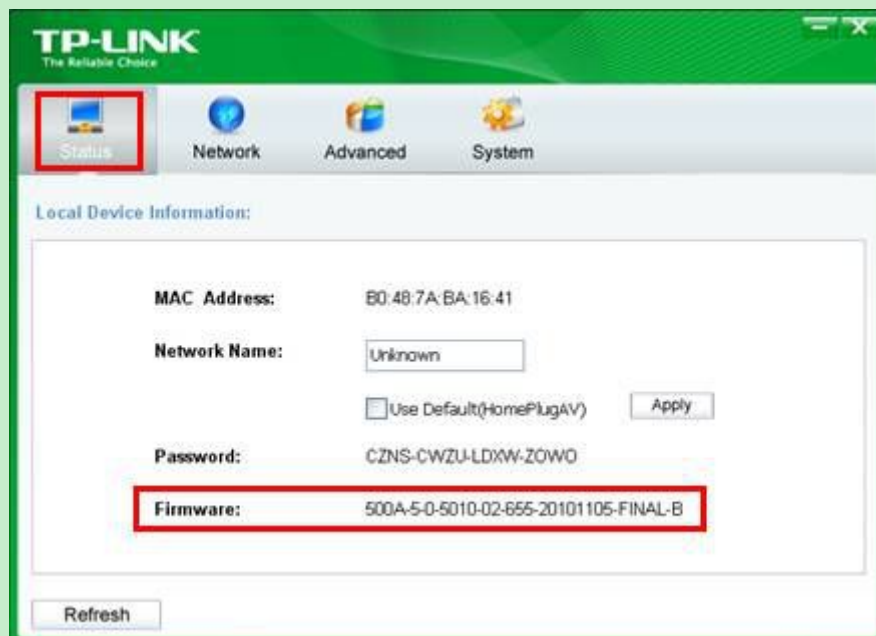
Step 3: Click **Browse** again a select the related **PIB** file from download folder.



Step 4: Click **OK** and wait a moment until it finished.



Step 5: Check the firmware version in **Status** tab to see whether it's been successfully upgraded.



Step 6: After upgrading, you should pair your Powerline adapters to build the Powerline network again.